

CFD-DEM simulations and modelling of velocity distributions

Master thesis

Work packages:

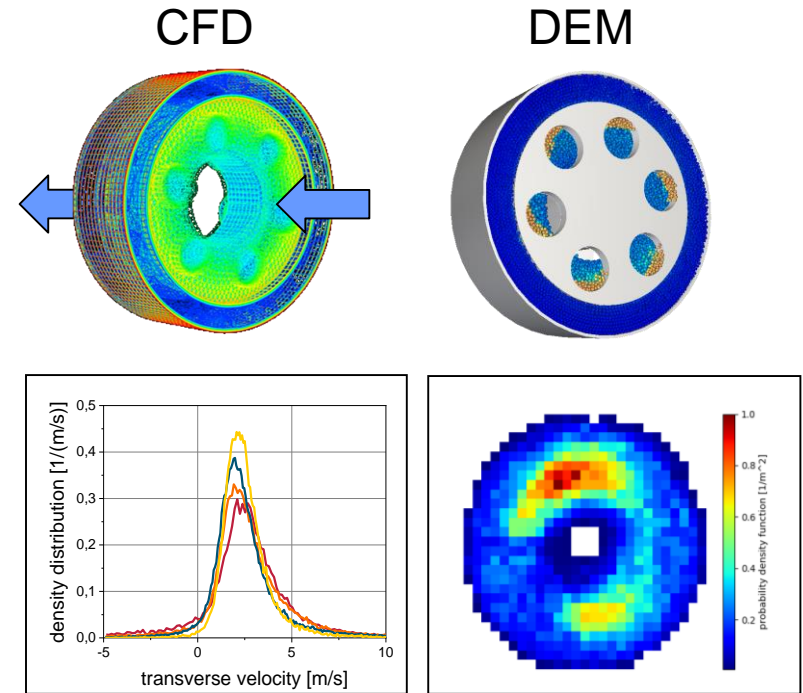
- Coupled CFD-DEM simulations
- Comparison of simulation results to previous experimental results
- Development of a GUI to display the results

Methods:

- CFD-DEM simulations, DEM (Rocky), CFD (Fluent)
- Coding in Python

Helpful knowledge:

- Python and/or other programming languages
- Software: Fluent (not mandatory)



contact:

Christoph Thon, Ann-Christin Böttcher

Tel.: 0531-391-65553, 0531-391-9641

c.thon@tu-braunschweig.de, a-c.boettcher@tu-braunschweig.de

